

PRODUCT DATASHEET

LS V -500/840/5

LED STRIP V 500 | LED strips with 500 lm/m for general applications



Areas of application

- General indoor illumination
- Decorative illumination
- Private living areas

Product benefits

- Great scope of design options due to long and flexible LED strips
- Easy installation, no tools required for connection
- Easy mounting on many smooth surfaces thanks to self-adhesive tape
- Maximum flexibility due to large range of accessories
- Simple connection thanks to integrated cables on both sides

Product features

- Flexible and cuttable LED strip
- Smallest cuttable unit: 100 mm
- Lifetime (L70/B50): up to 30,000 h at Tc max.: 75°C
- Luminous flux: 500 lm/m
- Color rendering index R_a: 80
- Large range of color temperatures: from warm white to cool daylight
- Dimmable with suitable drivers, see also www.ledvance.com/dim

TECHNICAL DATA

Electrical data

Nominal wattage	24.00 W
Construction wattage	24.00 W
Nominal wattage per meter	5 W
Nominal voltage	24 V
Input voltage range	23...25 V
Type of current	DC
Nominal current	1000 mA

Photometrical data

Luminous efficacy	112 lm/W ¹⁾
Luminous flux	2450 lm
Luminous flux per meter	560 lm ¹⁾
Color temperature	4000 K
Color rendering index Ra	> 80
Light color LED	Daylight
Light color (designation)	Daylight
Standard deviation of color matching	≤5 sdcm

¹⁾ Value based on first meter of the product

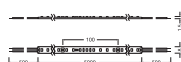
Light technical data

Beam angle	120 °
Rated beam angle (half peak value)	120.00 °

LED MODULE INFORMATION

Number of LEDs per meter	70
Number of LEDs per module	350
Number of LEDs per smallest unit	7

Dimensions & Weight



Length	5000.00 mm
Length – smallest unit	100 mm

Cable length	500.000
Width	8.00 mm
Height	1.50 mm
Prewired	Yes
Conductor cross section	0.5 mm ²
LED pitch	14.29 mm
Short pitch	No
Product weight	78.00 g

Temperatures & operating conditions

Ambient temperature range	-20...+55 °C
Maximum temperature at tc test point	75 °C

Lifespan

Nominal lamp life time	30000 h
------------------------	---------

Capabilities

Dimmable	Yes ¹⁾
Lowest bending radius	30,0 mm
Self-adhesive	Yes

¹⁾ Dimmable with suitable drivers, see also www.ledvance.com/dim

Certificates & Standards

Approval marks – approval	CE / TUV
Protection class	III
Type of protection	IP00
Energy class of contained light source	F
ID of contained light source	AC38041
Salt mist resistance acc. IEC 60068-2-52	No
UV resistance acc. IEC 60068-2-5	No

LOGISTICAL DATA

Temperature range at storage	-20...+80 °C
------------------------------	--------------

EQUIPMENT / ACCESSORIES

- Connectors, profiles and covers for several mounting options available
- Endcaps have to be ordered separately

DOWNLOAD DATA

Documents and certificates



User instruction



Addon Technical Information



Declarations Of Conformity CE

Photometric and lighting design files



IES file (IES)



LDT file (Eulumdat)



LDC typ polar

Tender texts



Tender documents

LOGISTICAL DATA

Product code	Packaging unit (Pieces/Unit)	Dimensions (length x width x height)	Gross weight	Volume
4058075707832	Folding box 1	242 mm x 242 mm x 26 mm	426.00 g	1.52 dm ³
4058075707849	Shipping box 30	450 mm x 420 mm x 230 mm	6434.00 g	43.47 dm ³

The mentioned product code describes the smallest quantity unit which can be ordered. One shipping unit can contain one or more single products. When placing an order, for the quantity please enter single or multiples of a shipping unit.

DISCLAIMER

Subject to change without notice. Errors and omission excepted. Always make sure to use the most recent release.